

PRODUCT OVERVIEW



WebRelay-10 Plus™ is a robust, industrial relay board with Ethernet communications. It provides remote relay control through its ten large 30-Amp relays.

The relays can be individually controlled using a standard web browser or by sending commands from a custom control application. Included features are a Task Builder, email alerts, two discrete inputs, device logging, and remote temperature and/or humidity monitoring.

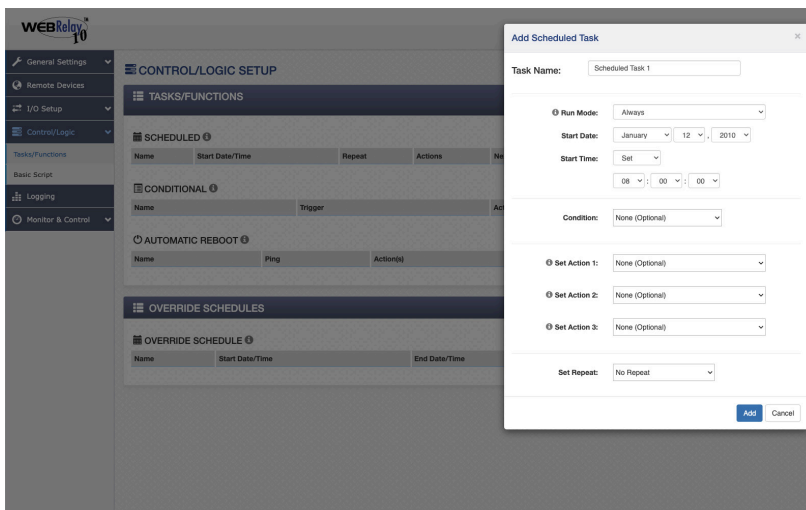
With the Task Builder, easily program up to 50 Scheduled tasks, 50 Conditional tasks, 20 Automatic Reboot tasks, and 20 Override Schedules.

It is self-contained with a built-in web server, and requires no external software, additional network modules, or computers. However, it can be connected to our optional ControlByWeb Cloud service for additional management and data access features.

WebRelay-10 Plus™ is designed for industrial applications and can be DIN-Rail mounted inside a control cabinet. Tab connectors (1/4 inch) are used for power and relay contact connection.

Features:

- Ten independent 30-Amp Relays (Form C, SPDT)
- Secure, built-in web server for configuration and remote monitoring; no external servers, services or subscriptions required
- No special software or device drivers required
- Communication protocols include: HTTP(S), XML, Modbus, JSON, SNMP, Remote Services, and Remote Monitoring
- Programmable tasks for scheduled events or conditional logic
- DIN-Rail mountable
- 1/4" tab-connectors
- Send email alerts based on user-defined conditions (supports encrypted email servers, such as Gmail)
- UL/CUL listed relays (E197852)
- Up to sixteen temperature/humidity sensors
- Dry-contact sensors or switches can be connected for local control of relays or for monitoring external devices
- Detailed log information for relay changes, events, Modbus TCP/IP requests, high/low temperatures, input changes, network traffic, and more
- Real-time clock syncs with NTP server
- 5-Year Warranty



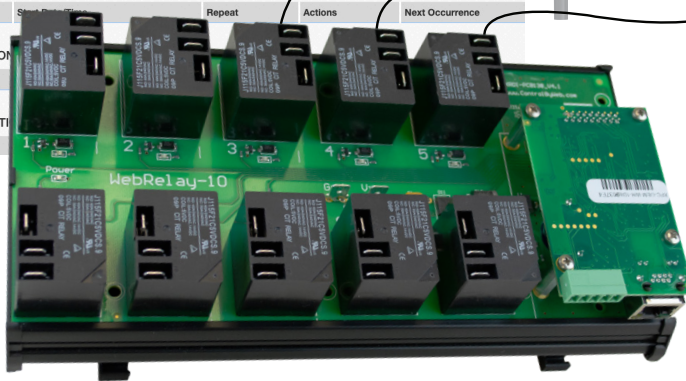
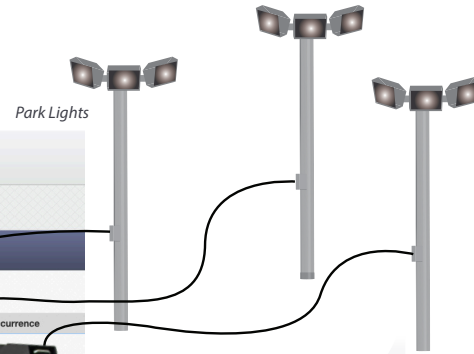
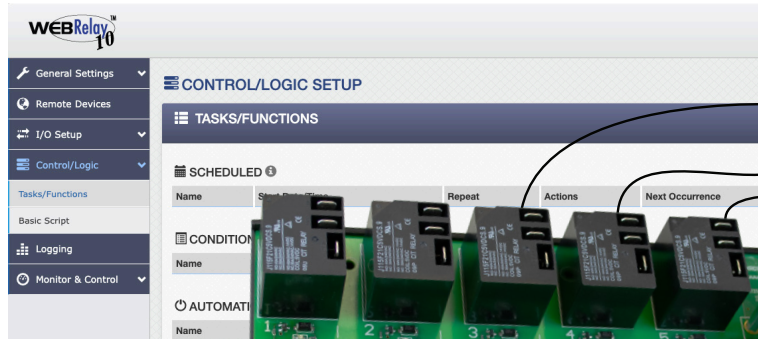
Scheduled Task Page



WebRelay-10 Control Page

APPLICATIONS & SPECS

Scheduled Lighting Control



Models:

- X-WR-10R12-IEP

Power Requirements

- Voltage: 9-28VDC
- Max Current: 477mA - 1391mA
- Note: Current based upon voltage applied and device settings. See user manual for complete breakdown.

Relay Contacts

- Number of Relays: 10
 - N.O.
 - 40A @ 240VAC resistive
 - 30A @ 277VAC General Purpose
 - 2hp @ 250VAC
 - N.C.
 - 30A @ 240VAC, 30VDC resistive
 - 20A @ 277VAC General Purpose
 - 1-1/2 hp @ 250VAC
- Contact Type: SPDT (Form 1C)
- Load Type: General Purpose
- Contact Resistance: < 30 milliohms initial
- Contact Material: AgSnO2
- Electrical Life: 100K cycles (Typical)
- Mechanical Life: 10M cycles (Typical)
- Environmental Rating: Over voltage Category II, Pollution Degree 2
- Relay Modes: ON/OFF or Pulse
- Pulse Timer Duration: 0.1 to 86,400 Seconds (1-day)
- Relay Connections: 1/4" Tab Terminals

Digital Inputs

- Number of Inputs: 2
- Type: Non-Isolated
- Voltage Range: 0-5VDC
- Current: 47K Pullup
- Minimum Hold Time: 20ms
- Input Isolation: Non-Isolated
- Input Functions: Counters, Email Alerts, SNMP Traps
- Maximum Count: 32-bit
- Max Count Rate: 25Hz
- Edge Trigger: Rising, Falling or Both

Temperature Sensors

- Maximum Number of Sensors: 16
- Type: Dallas Semiconductor DS18B20
- Temperature Range: -67°F to 257°F (-55°C to +125°C)
- Accuracy: ±0.5°C (from -10°C to +85°C)
- Sensor Functions: Monitor Temperature, Log Temperature, Email Alerts, SNMP Traps
- Humidity Type: Xytronix Model X-DTHS-P sensor
- Humidity Range: 0-100% RH
- Accuracy: ±2%
- Max Cable Length: 600 feet (180m) maximum combined cable length

Real-Time Clock

- Manual or NTP(Network Time Protocol) setup
- NTP Sync Period: Once, Daily, Weekly, On Power-up
- Auto Daylight Savings Adjustment
- Battery (capacitor) Power Backup

Capacitor Power Backup

- Backup Functions: Retain Real-Time Clock, External Variables, Relay State
- Backup Duration: 24 hours

Network

- Type: 10/100 Base-T Ethernet Port
- Setup: Static IP address assignment or DHCP, HTTP port selectable

Connectors

- Accessory Connector: 5-Position, 3.81 mm terminal spacing, Removable. For 16-28 AWG wire
- Network: 8-pin RJ-45

LED Indicators

- Number of LEDs: 13 - Power on, Relay coil energized 1-10, Network linked, Network activity

Additional Applications

- ✓ Automation Controller
- ✓ Industrial Automation
- ✓ Car Wash Industry
- ✓ More...

Physical

- Size:
 - 9.125in (232mm) wide
 - 4.25in (126mm) tall
 - 2.425in (62mm) deep
- Weight: 22 oz (626 grams)
- Enclosure Material: PVC
- Enclosure Flame Rating: UL94 V1
- Operating Temperature: -40°F to 150°F (-40°C to 65.5°C)

Protocols

- HTTP(S), XML, Modbus, JSON, SNMP, Remote Services, and Remote Monitoring

Logging

- Log File Size: 3,072-Kbyte (up to 50,688 logs)
- Storage: Nonvolatile Flash
- Buffer Architecture: Circular Buffer

Log data can be periodically read and stored on a computer

Password Settings

- Password protection on setup page: Yes
- Password protection on control page: Optional

Electromagnetic Compliance

- IEC CISPR 22, CISPR 24
- FCC 47CFR15 (Class B)
- EN55024 ITE Immunity (2010)
- EN55022 Emissions (2010)

Product Safety Compliance

- IEC 61010-1

